

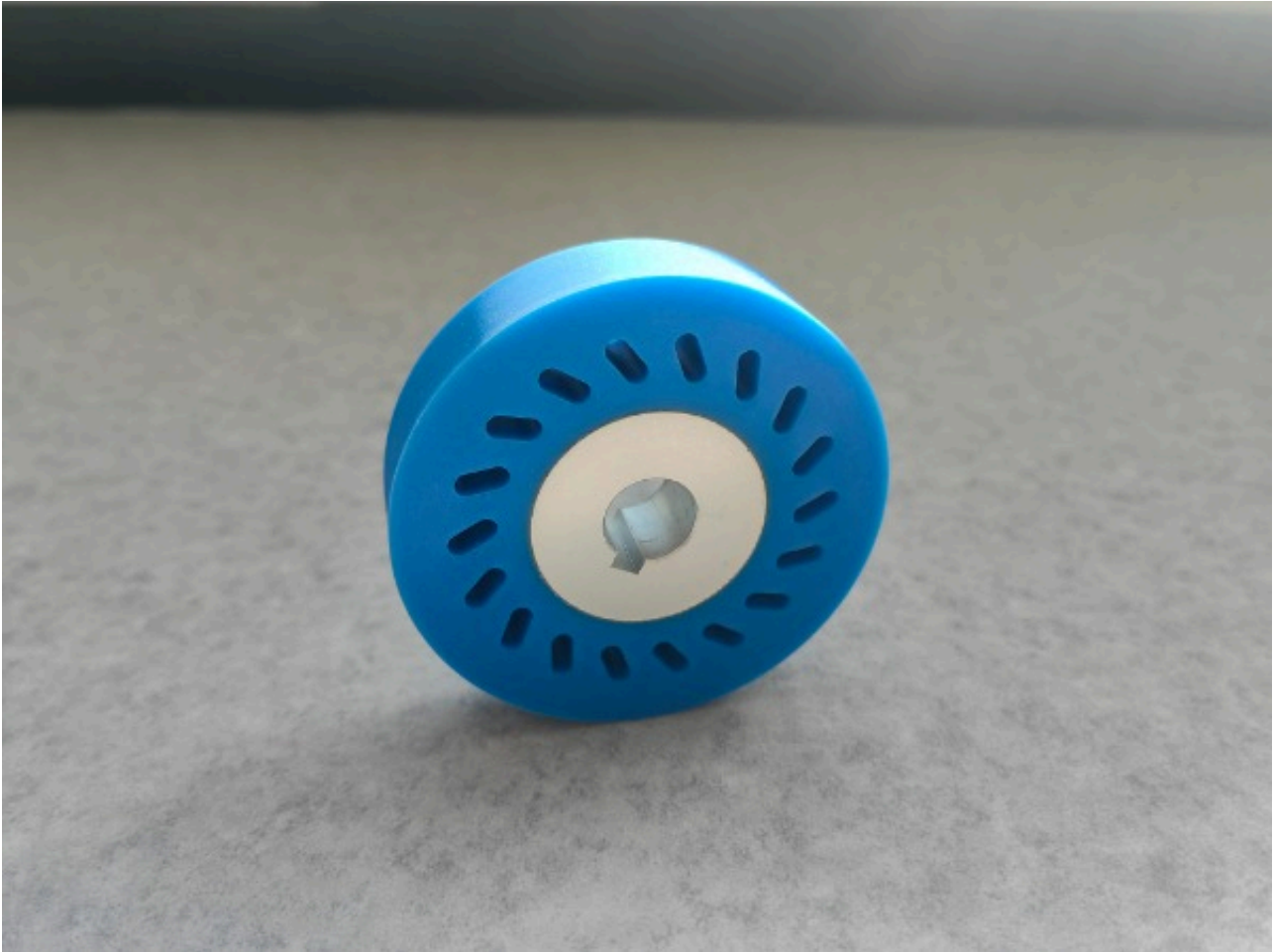
---

# Keyway-mounted Polyurethane AGV Wheels

Title	Keyway-mounted Polyurethane AGV Wheels
Thumb	
Address	Anfeng Industrial Park, Dongtai City, Jiangsu, China
Website	<a href="https://www.poly-wheels.com/">https://www.poly-wheels.com/</a>
Email	<a href="mailto:sale06@kfqizhongji.com">sale06@kfqizhongji.com</a>

## Description

Traditional hub mounting methods often face issues such as low torque transmission efficiency and poor wear resistance. With the introduction of polyurethane material, setting a new standard for demanding industrial applications.



## Core Advantages

### 1. Zero-Slip Precision Transmission

The keyway-meshing design ensures absolute zero relative rotation between the wheel and the shaft, completely eliminating the micro-slip phenomena that may occur with traditional press-fit methods!

### 2. Ultra-High Positioning Accuracy

The keyway structure provides unparalleled angular positioning precision, ensuring that the overall linear motion accuracy of the machine wheel angle deviations and enhancing

### 3. Exceptional Impact Resistance

The inherent excellent elasticity of Vulkollan® material, combined with the rigid design environment, such as steel plate scans and track intersections, in complex ground

### 4. Extreme Environmental Adaptability

Chemical Resistance: Vulkollan® offers excellent resistance to common industrial chemicals such as oil, lubricants, and weak acids or bases.

Wide Temperature Range Stability: Maintains stable physical properties within a temperature range of -30°C to +100°C.

Wear Life: Service life can be 3-5 times longer than that of ordinary polyurethane wheels.

## Application Scenarios Precision Matching

Semiconductor and Electronics Manufacturing: In cleanroom environments, traditional Vulkollan® material perfectly meets the requirements of ISO Class 5 & 6 cleanrooms.

---

**Automotive Assembly Lines:** When heavy-duty AGVs transport heavy components such as engine blocks or transmission housings, they must maintain precise positioning to avoid misalignment or damage. Even under 3-5 ton loads, avoiding positioning errors caused by wheel slippage is critical.

**Aerospace Manufacturing:** The transportation of large composite components like fuselage sections or wing panels requires extreme care. These parts are often fragile and can be damaged during transportation by over 90%, protecting sensitive components from

Human Machine Interface (HMI) and safety features. The AGV's chassis is built with reinforced steel and reliable wheel surface wears to its finish, the transmission connection remains secure,

## Customization Service Capabilities

We provide complete customized solutions:

**Keyway Specifications:** Customized to meet specific shaft standards, including

**Hardness Range:** Offers multiple hardness options from Shore A 85° to 98°.

**Wheel Surface Design:** Various traction surface designs, including flat surfaces, V-shaped

**Anti-Static Versions:** Surface resistance of  $10^5$ - $10^8 \Omega$ , meeting requirements for

## Conclusion

Yuhuan's keyway-mounted AGV solution provides a trustworthy solution for high-precision material handling. It ensures that your automated systems operate with maximum efficiency and reliability.