
Industrial Polyurethane Drive Wheel

Title	Industrial Polyurethane Drive Wheel
Thumb	
Address	Anfeng Industrial Park, Dongtai City, Jiangsu, China
Website	https://www.poly-wheels.com/
Email	sale06@kfqizhongji.com

Description

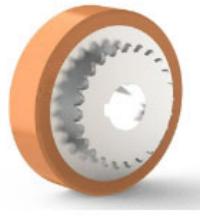
The polyurethane drive wheel is mainly used in industrial automation equipment. The surface is made of polyurethane material, which has a high degree of wear resistance and a low coefficient of friction. It is a key component for transmitting power, contacting the ground or running



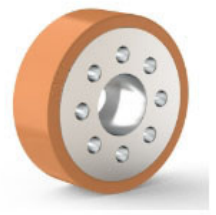
Flange structure drive wheel



Keyway structure drive wheel



Sprocket



PU-coated wheel with expansion sleeve

Bliss is focused on providing high quality products for heavy industrial automation. If you have relevant needs, please contact us. [Customized according to your actual needs.](#)